

# 40-450 Watt

High efficiency monocrystalline silicon solar modules

0~+3% tolerance

ISO9001:2008, ISO14001:2004, OHSAS18001

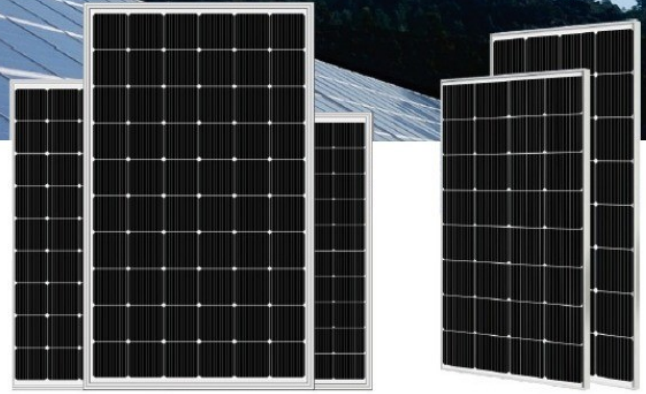
Factory certificates

IEC61215, IEC61730, UL1703 Product certificates



# TRISOL<sup>®</sup> PERC 182 Cell 450W

## SP240M-32



## Solar module features



### PERC 182 cells

Better capability of current collection, larger area of power generation, nice appearance, more suitable for installation on the roof.



### High output power

Using PERC battery structure technology (Low resistance characteristics), output power of 60pcs monocrystalline cells reaches Max 450W (Highest Conversion efficiency to 20.9%)



### Low light performance

Using excellent glass and texture surface making of solar cell, outstanding performance can be obtained in low light condition.

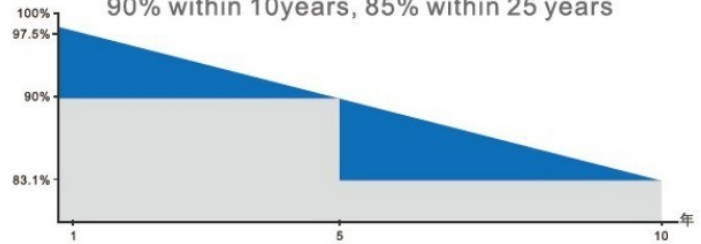


### Adaptability of harsh environment

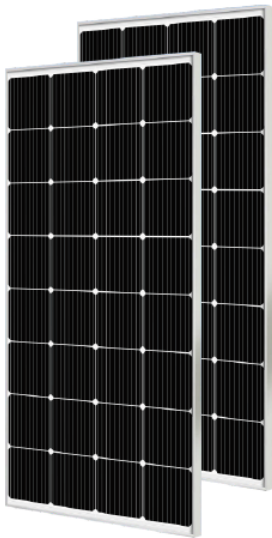
Corrosion tests have certified in high salt fog and high ammonia environment.

## Guaranteed output power

90% within 10 years, 85% within 25 years



## Module Picture



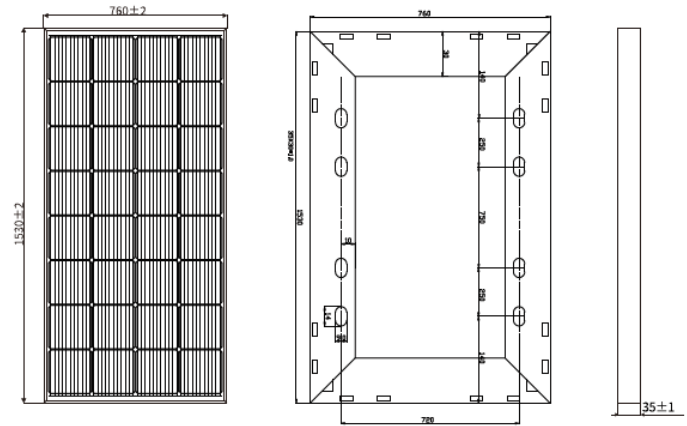
## SP240M-32

### Comprehensive Certificates

- IEC61215, IEC61730
- ISO9001:2015 Quality management systems
- ISO45001: Environmental management systems
- ISO45001:2018 Occupational health and safety management systems



## Mechanical Diagrams



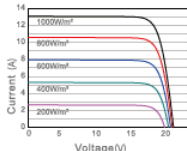
PS: Frame color and cable length can be customized

## Electrical Parameters at (STC)

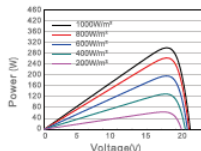
Module	Power (W)	Module Efficiency(%)	Voltage at Pmax(Vmp)	Current at Pmax(Impp)	Open Circuit Voltage(Voc)	Short Circuit Current(Isc)	Power Tolerance(w)
SP240M	240W	20.70%	18.24	13.16	21.80	13.95	±3%

## Characteristics

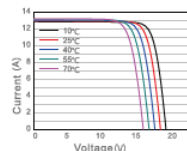
Current Voltage Curve SP240M/32



Power Voltage Curve SP240M/32



Current Voltage Curve SP240M/32



Mechanical Parameters	
Solar Cell(Type/Size)	MONO(182mm)
Solar Cells Number	32Pcs(4x8)
Dimension	1530x760x35mm
Weight	14.3Kg/Pcs
Tempered Glass	3.2 mm High Permeability Coated
Frame	Anodized aluminum alloy
Junction Box	IP67, 3*bypass diode
Cable	4.0mm², (+)1000mm/(-)1000mm
Connector	Original MC4/Compatible MC4
Mechanical Load	Front 5400PA/back 2400PA

Packing	
Module Type	SP240M-32
Carton Size	1550x780x85mm
Number	2Pcs/Ctn
Weight	24Kg/Ctn
Volume	0.100Cbm/Ctn
20GP Container	532Pcs
40HQ Container	1356Pcs

STC: Light intensity 1000W/m² Battery temperature 25°C atmosphere quality=15

NOCT: Light intensity 800W/m² Battery temperature 20°C atmosphere quality=15 wind velocity 1m/s